



Quality – Responsibility – Efficiency



Agenda

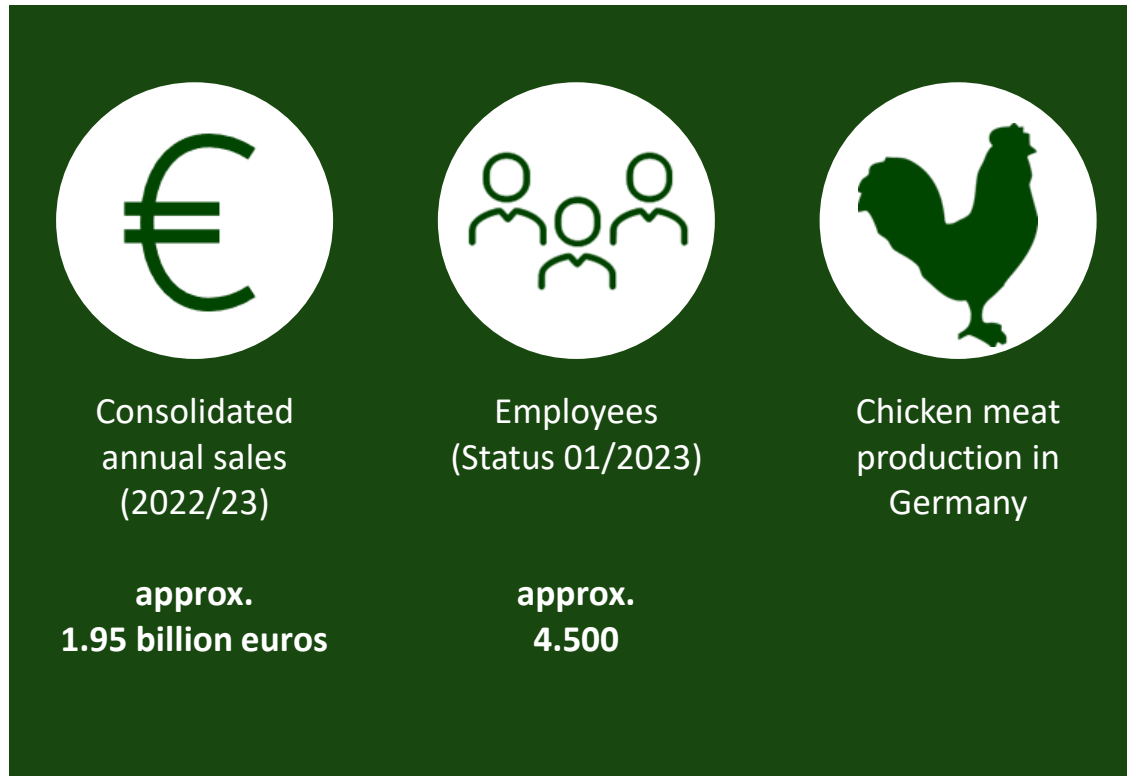


1. The 12 SDG Impact Actions @ Landgeflügel



2. Example: Train unloading station

Landgeflügel – part of a vertical integrated chicken production in northwest Germany



Consolidated annual sales (2022/23)
approx. 1.95 billion euros

Employees (Status 01/2023)
approx. 4.500

Chicken meat production in Germany



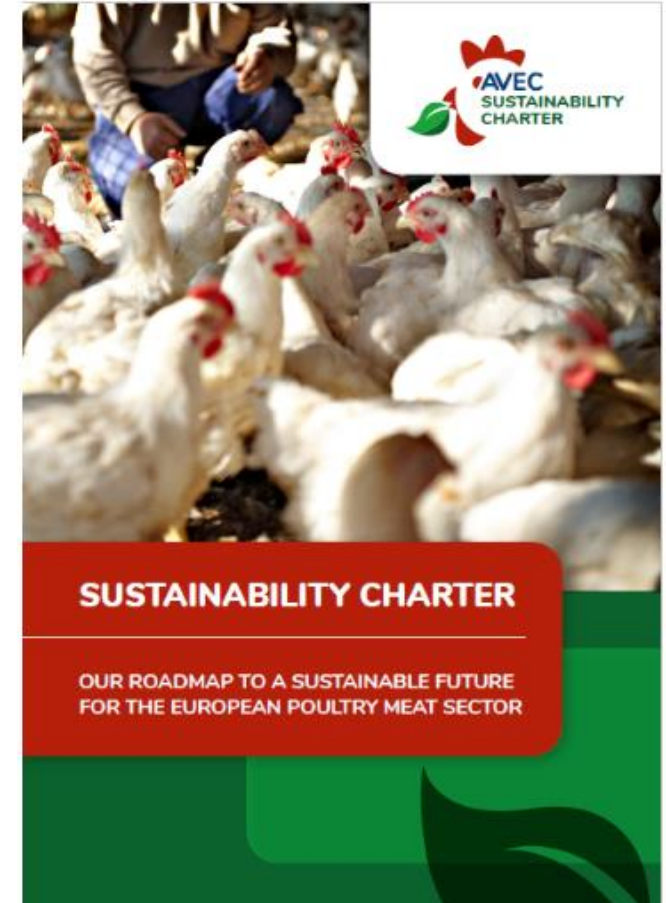


1. The 12 SDG Impact Actions @ Landgeflügel



Challenges in embracing Sustainability

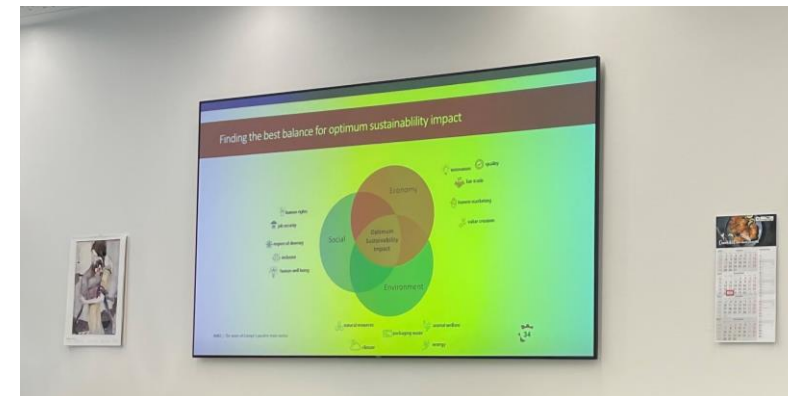
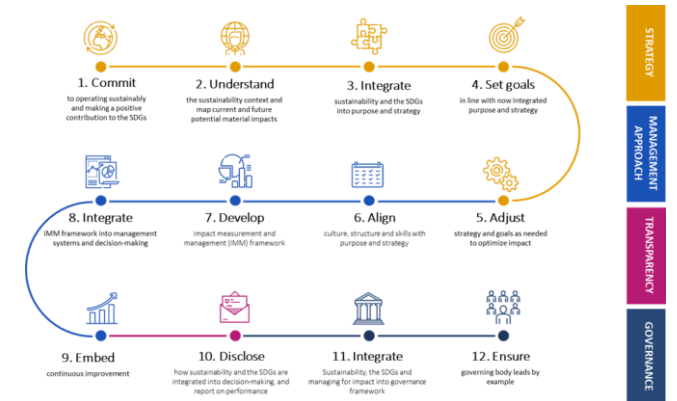
- **Meeting our own entrepreneurial expectations**
 - Quality + Responsibility + Efficiency = Sustainability
- **Compliance with statutory and other legal requirements**
 - Act of corporate due diligence in supply chains
 - CSRD, ESRS
- **Meeting stakeholder expectations**
 - Customers (Retail, Industry, ...)
 - Employees and applicants
 - Public



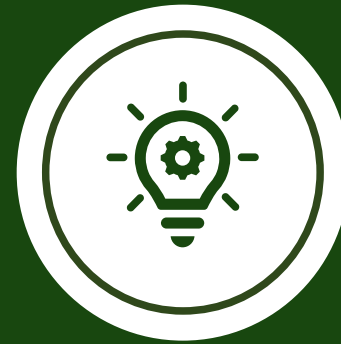
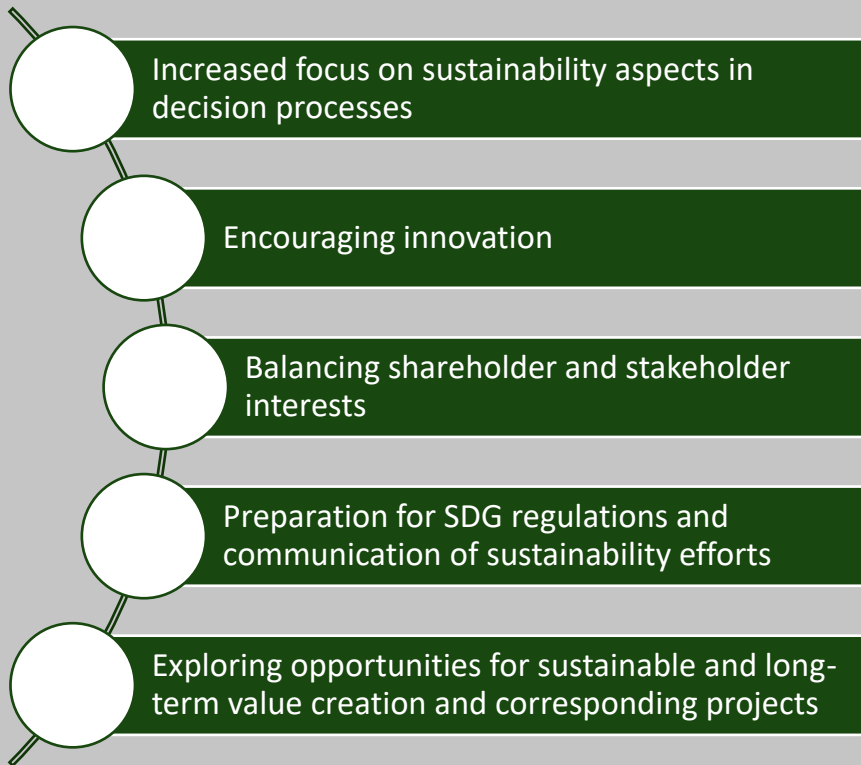


Managing for impact in the chicken meat industry

- **Wholistic approach** fundamental for sustainability
- **12 SDG Impact Actions** served as a decision framework
- **Project should clarify the questions**
 - of whether the UNDP SDG Impact Standards can also be used in a medium-sized company in the poultry meat sector, or
 - what adjustments need to be made, to meet the expectations of **our company**
- **Implementation in a combination of advice and guidance from UNDP and as self-assessment**
 - C-suit workshop
 - Workshops with sustainability leads and representatives of each department
 - Self-Assessment using UNDP's tool



Five Business Improvements through SDG Impact Standards



Waste



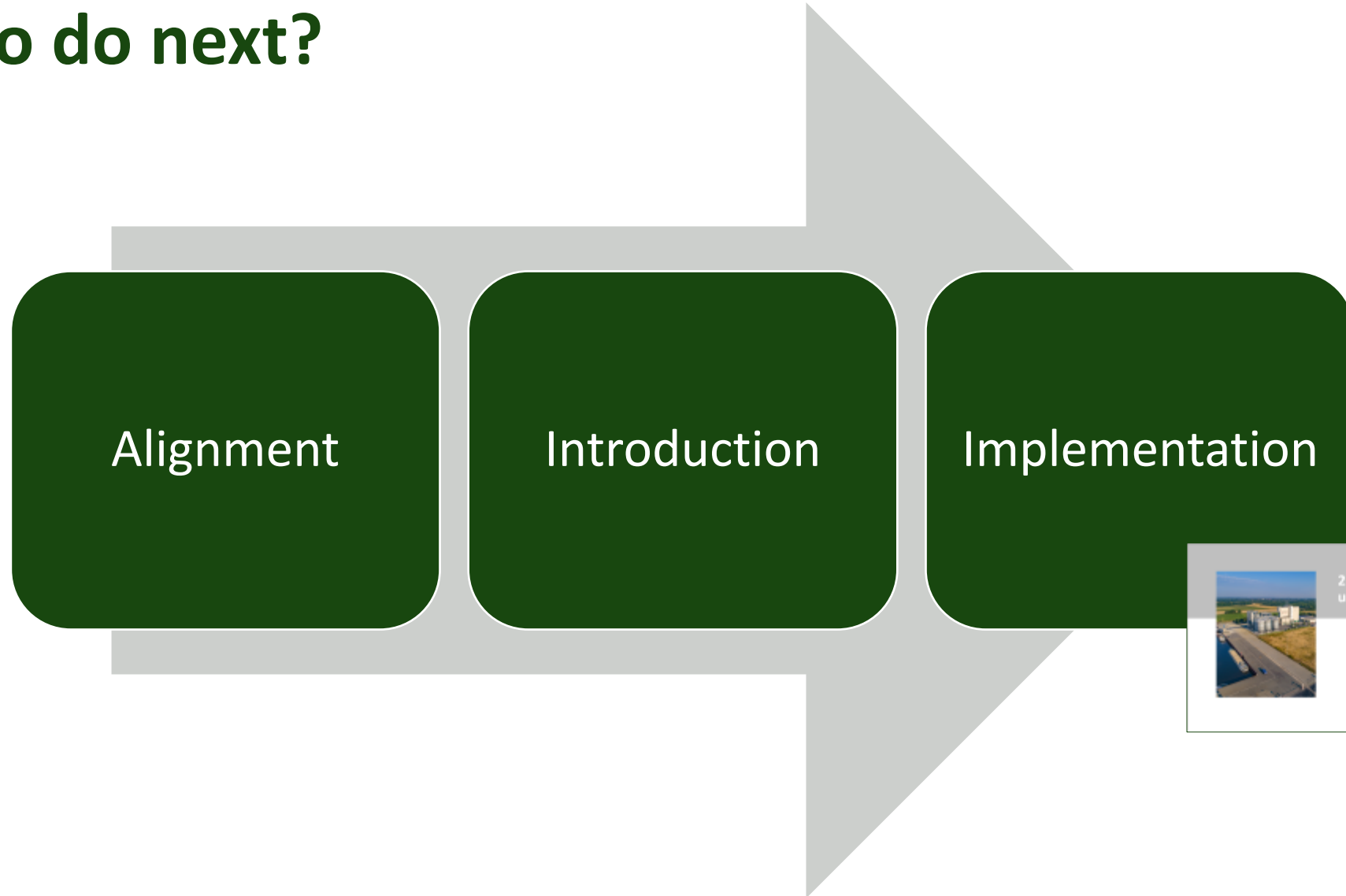
Emissions



Welfare



What to do next?





2. Example: Train unloading station

Status Quo raw material transport to feed mills

Feed mills Haren & Meppen (Boizenburg)

- Raw material consumption per year > 1 Mio. t
- Transport by truck or ship
- International commodity flows dependent on infrastructure, quality and quantity of harvests and geopolitical disruptions
- Demand cannot be met by domestic raw materials alone (grain & feedstuff are imported from whole Europe)





Details: Train unloading station

- Mainly intended for grain deliveries from Europe
- Expected quantities $\geq 200,000$ tons per year
- Approx. 2 trains per week
- One train replaces approx. 80 trucks or 1.5 shiploads
- Arrival of the first train planned for first week of December



- Train station as one example

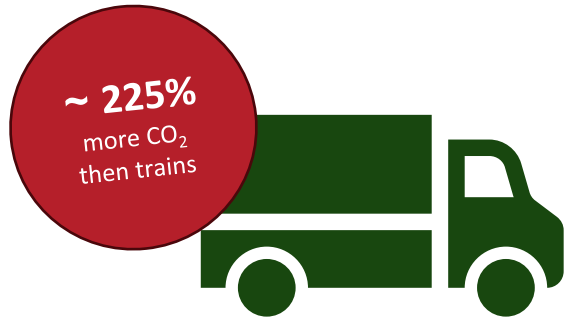
Use of trains as third means of transport

Corresponds to the three pillars of sustainability:

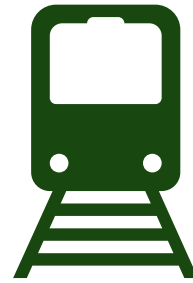
- ✓ **Economical:** larger quantities and more similar qualities are transported at once
- ✓ **Social:** less road traffic
- ✓ **Ecological:** saving CO₂ by replacing trucks with trains



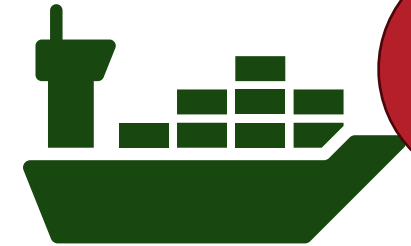
Comparison: CO₂ balance of transport vehicles



106,16 Emissions in grams
of CO₂eq per tkm



32,61 Emissions in grams of
CO₂eq per tkm



42,55 Emissions in grams of
CO₂eq per tkm

CO₂ savings

by replacing truckloads or shiploads with a trainload (2000t) per kilometer

Truckload -> Trainload

147.1 kg of CO₂

Shipload -> Trainload

19.9 kg of CO₂



...we are on track...

Thank you for your attention