



LDC GROUP & CSR Presentation

November 2023



LDC'S KEY FIGURES



POULTRY

No.1 on the French market
and one of the European
leaders



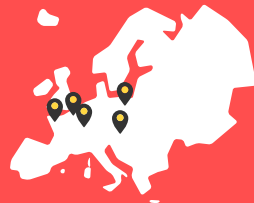
CONVENIENCE

No.1 for ready-cooked dish
and asian products
No.2 for sandwiches, pizzas
and quiches



5,8

billion euros in
turnover including 22%
Export & International



102

plants in Europe
14 logistics centers

At 31/05/2023



23,400

employees including
83% in France

At 28/02/2023



8,300

partner breeders in
Europe including
6,800 in France



243

million euros of
investment per year



57

million euros bonus to
employees (employer
contributions and participation)



OUR STRATEGY

Acting with our regions

Our 4 commitments :



To our mission :

Food Sovereignty in the respect of **Women, Men and Nature** :

- *safe and healthy local products,*
- *sourced from increasingly fair sectors,*
- *and produced by responsible women and men,*
- *processed at a local scale.*



The Case Study

WHY ?

Reducing of our environmental footprint



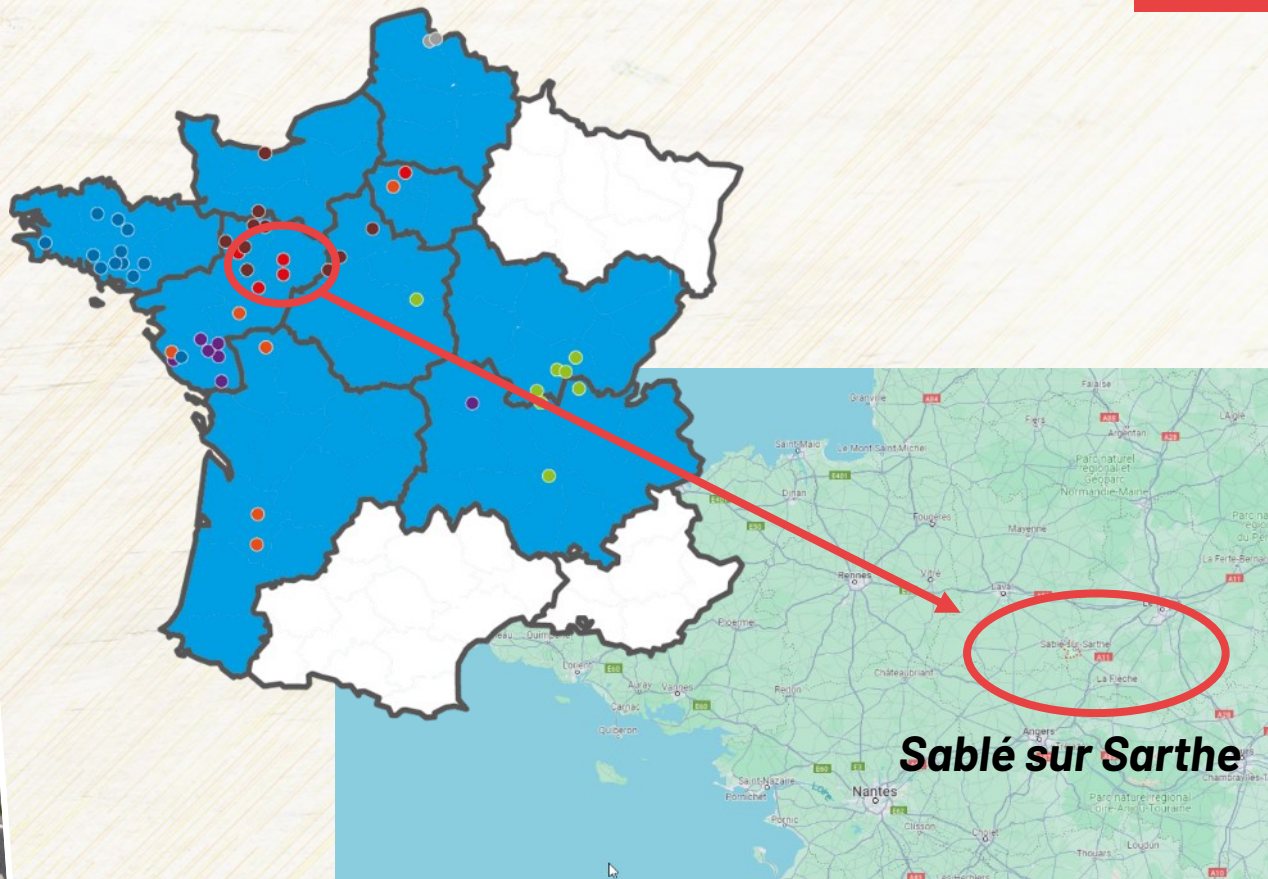
Goals of water & energy savings, co-product and waste management

- **-5%** of water saved in 2025 compared to 2018
- **-10%** energy consumed in 2025 compared to 2018
- **100%** of co-produced organic materials resulting from group activities are recovered (animal feed, energy...)
- **More than 87 %** of waste (non-organic and non-hazardous) recycled by 2025





THE PLANT : LDC Sablé sur Sarthe

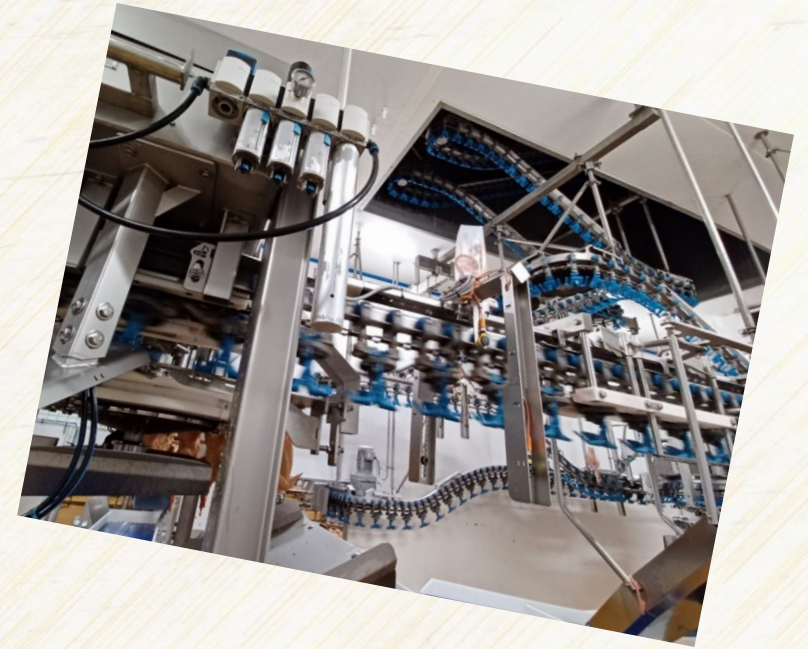


Area :
35 000 m²
Workers :
1 500 collaborators

THE ACTIVITY of this factory

Our business :

- Slaughter house
- Cut up and packaging of poultry
(chicken and turkey)
- FPP (Further Processed Products)



Chicken Capacity :

12,000 birds per Hour (Bph)

Turkey Capacity :

between **3,500 and 2,800 birds** per Hour (Bph)

OUR COOLING AND HEATING SYSTEMS

Refrigeration :



Glycol -8°C

Glycol -11°C

Refrigerant fluid: Ammonia NH₃

Total Power: 8 000 Kw

Compression: 4 Screw compressor + 3 Piston compressors

Distribution: Two low-pressure capacities (LP cylinders) with 2 heat exchangers and glycol distribution

Warm Water :



Process hot water 80°C :

- Two boilers 4 and 3,75 Tons / hours, and 4 Heat Pumps

Hot cleaning water 55°C :

- Waste heat and Heat Pump

OUR CHALLENGE

How can we reduce our carbon footprint on this site?

As part of a partnership with **CoolPlanet** and **Johnson Controls**, LDC's maintenance and engineering teams worked closely together to :



Optimize energy use,



Reduce greenhouse gas emissions, in order to achieve our sustainable development objectives.

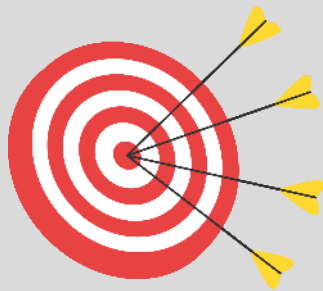
Our energy management tools (data) ,have enabled us to identify ways of optimizing the use of resources, while reinforcing our decarbonization.



THE SOLUTION

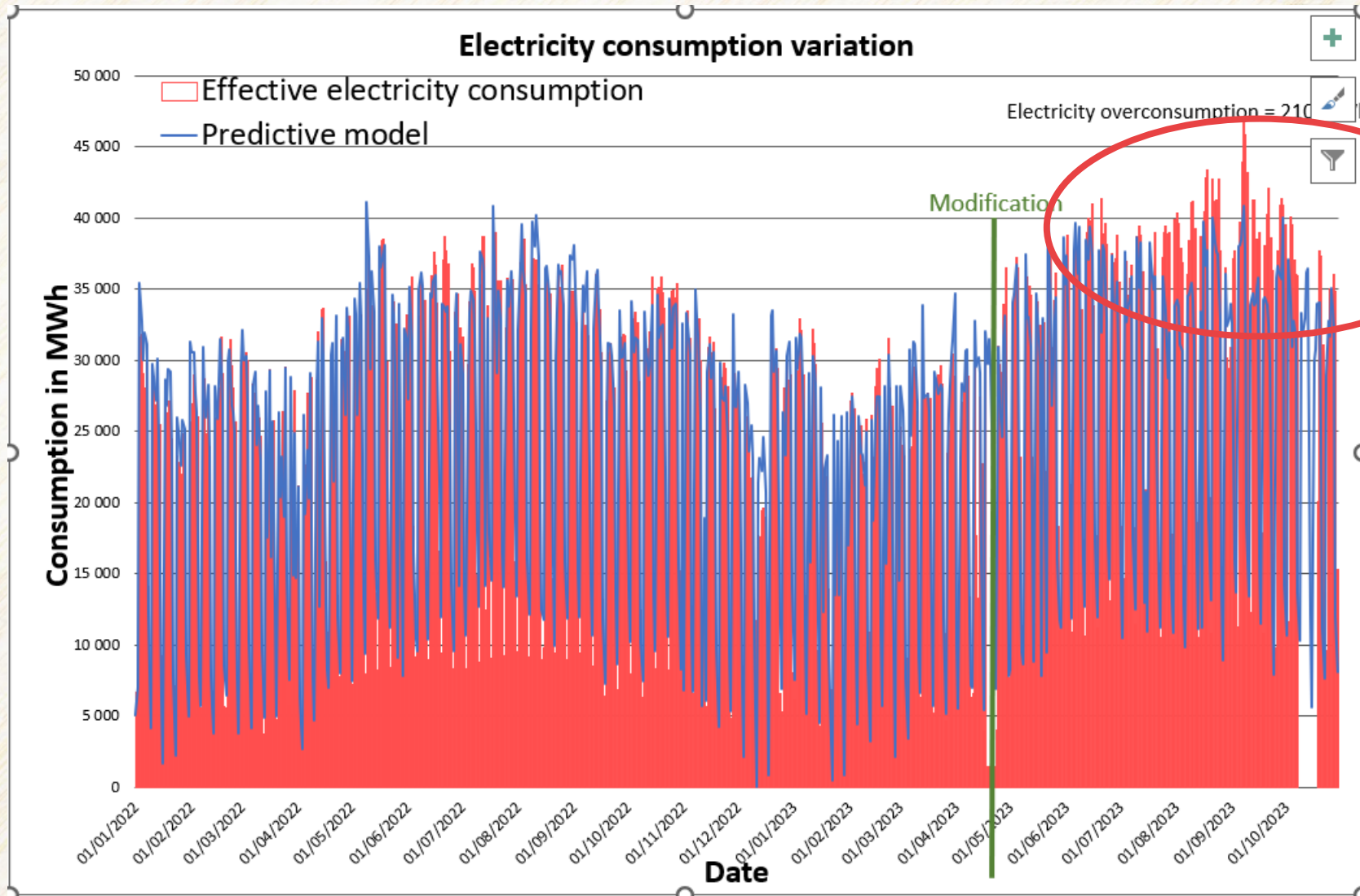
By analyzing the data and simulating solutions, Coolplanet suggested that we adopt a **single glycol temperature level** :

- 11°C for both loops, instead of two loops -8° C, -11 °C, by pooling gas and water networks



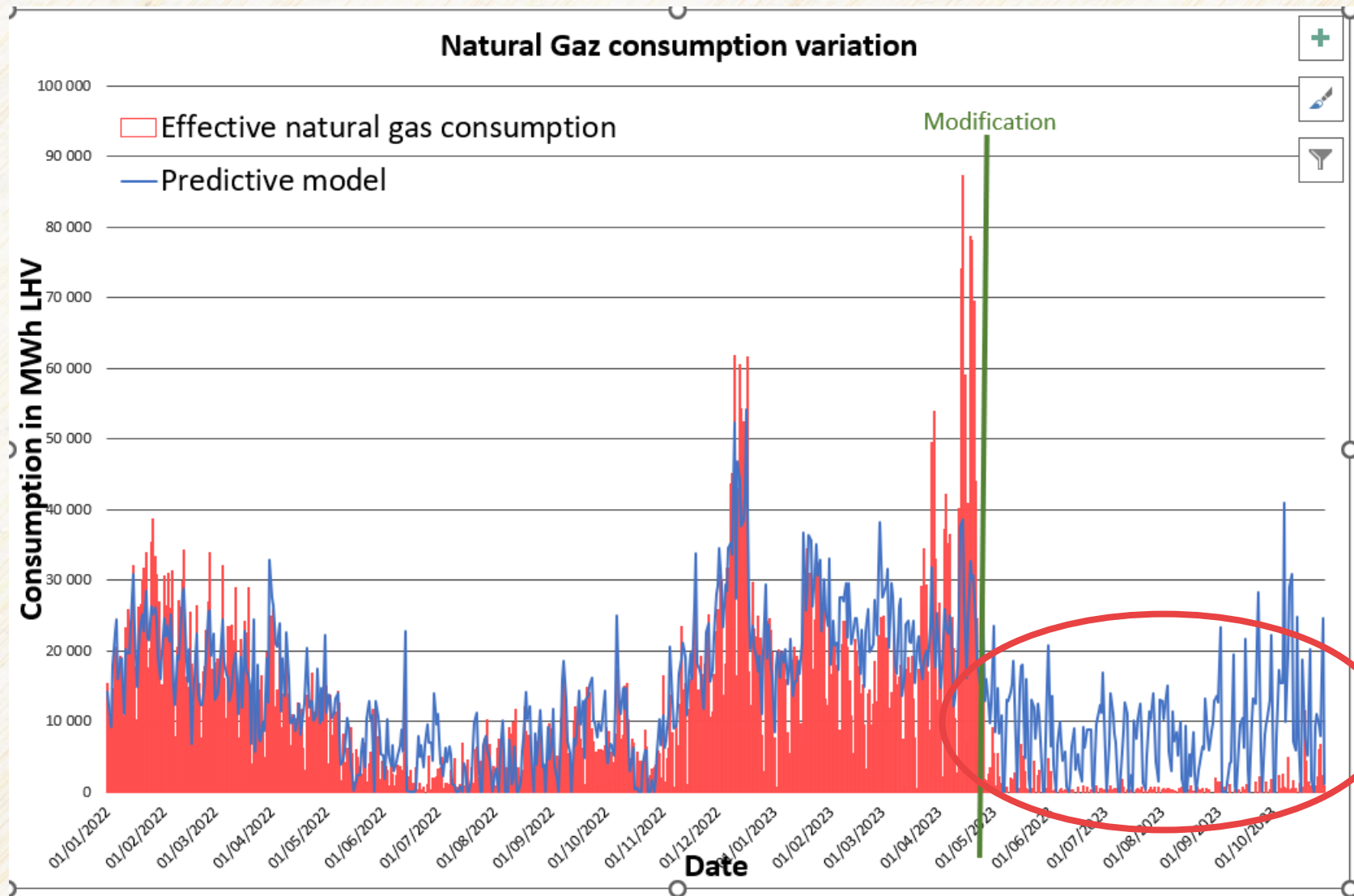
The objective: optimize the functioning of our heat pumps, with the target of minimizing the operation of our gas-fired boilers (Methane CH₄).

THE RESULTS



***Electricity increase,
complementary
consumption***

THE RESULTS

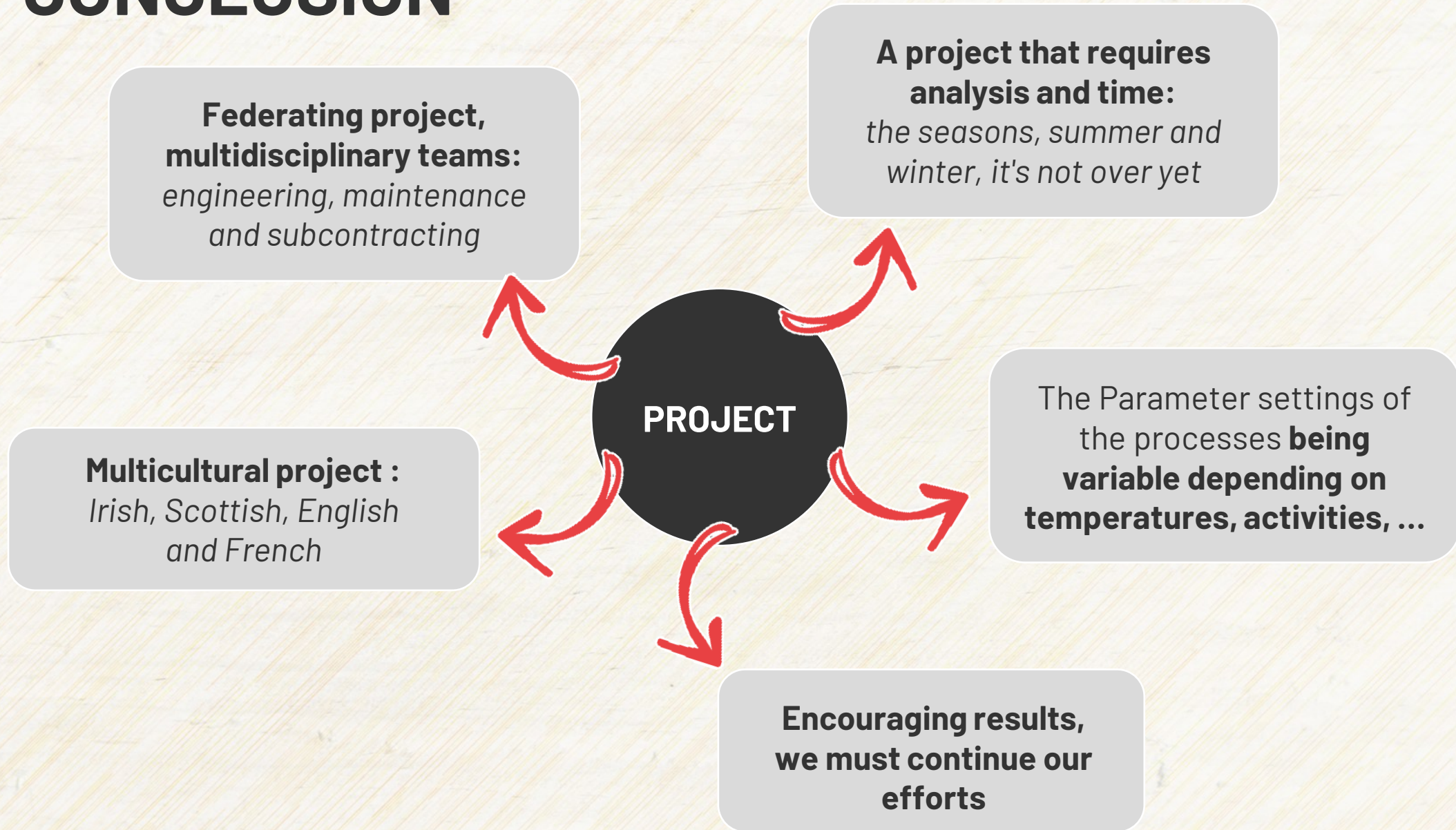


**Natural gas savings =
1 450 MWh LHV
Net CO2 savings =
305 tons eq. of CO2
over six month**

**Balance electricity/gas
costs €50,000 savings
over the year**

**GAS
SAVING**

CONCLUSION



Vidéo





Merci !



Acting with our regions



**"It is the women and men who make the company successful,
with the health of consumers and employees as a priority.**

This success will be the guarantee of our sustainable development."